



NANAIMO COMPUTER CLUB NEWS

October 2006 Volume 6 Issue 8

Inside this issue:

	<u>Page #</u>
AMD & Intel Duke It Out	1
What's New on the Gadget Scene	2
System Restore A Rewind Button For Your Computer	3 & 5
PC Humour	4
Works May go to Web	5
Computer Research News	6
Club Members Announcements	7
Attachments to Avoid /Shopping Sites of Interest / Sandisk Does It Again	8

AMD & INTEL Prepare to Duke it Out!

By Stan Beer - September 2006

Intel hits AMD with quad-core 70% performance boost !

Intel is pulling out all stops to turn up the heat on its smaller, but more nimble rival AMD. The latest salvo comes with the announcement that the new quad-core Core 2 Extreme chips for the high performance games market will be available in November sporting a whopping 70% performance hike.

The dual-core Core 2 Extreme blew its AMD Athlon counterparts out of the water in benchmark tests and the Core 2 Duo has proven to be a winner in both the notebook and desktop space.

With its new quad-core offering, Intel has turned the spigot up a notch or two. The November release for the gamer market is one thing, but the real pressure on AMD will be applied with the release of the Core 2 Quad for the mainstream desktop and notebook markets in Q1 2007.



Of course AMD will hit back a few months later with the release of its "real" quad-core processor in mid-2007. However, six months is a long time in this business.

Market shares can be won and lost. For Intel, it is a window of opportunity. For AMD, it is a period of digging in its heels and trying to hold its ground.

On the question of 65nm and 45nm development, Intel has been touting chip production as an area where it has the edge on AMD. This is true of course. AMD is yet to get its Dresden 65nm production plant up and running. However, the market really couldn't give a damn how chips are produced.

All consumers are interested are price and performance, not manufacturing details.

Submitted by: Y. Bulger



Brain--the apparatus with, which we think that we think.



What's New ?



Swimming fish, brought to life by USB

Every geek likes to add new and interesting toys to their desktop. And if these toys happen to be powered by USB, well then, all the more fun to have. The USB Mini Desktop Aquarium is the home to two life-like tropical fish. A small motor generates a current in the water, allowing the fish to gently swim about the tank. The aquarium is equipped with a high-intensity blue LED that illuminates the tank in dark environment. Both motor and LED can be independently switched off.

The LED and the water-current motor can be powered by USB connection or batteries. The package comes complete with the tank, two fish, and USB cable. Operation is simple! Just

add water to the tank, connect the cable to your computer, and enjoy the aquarium.



Keep your Drinks cool with USB

The USB Beverage Chiller is the only way to keep a drink cold while you're at your computer - and it looks cool on any desktop. With the USB Beverage Chiller at your side, you can keep your beverage chilled and stay at your

computer longer.

This translates into greater work or gaming productivity - and what geek doesn't enjoy increasing their efficiency. Just seconds after plugging the chiller into a USB port (no external outlet needed), the cold-plate chills to 45 degrees Fahrenheit, the perfect temperature for helping keep your beverage cool.

Submitted by: Y. Bulger



Automobile - A mechanical device that runs up hills and down people.



NANAIMO COMPUTER CLUB NEWS



System Restore - A Rewind Button For Your PC

Heidi V. Anderson - SmartComputing

Uh-oh. You installed a new device, driver, or program, and now your PC is running poorly. You've tried various fixes, such as Add Or Remove Programs or Device Driver Rollback in Windows XP, but you've still come to a dead-end. It's time to turn around and use a tool that Microsoft introduced when it released Windows Me: System Restore.

System Restore lets you restore your computer to a previous state—that is, a state that existed before you began encountering your current problem. Run into trouble, and you can revert to an earlier state without losing personal files (recent or otherwise), including word-processing documents, email messages, and bookmarked Web pages.

As you use your PC, Windows monitors changes to your system and application-related files and regularly creates what it refers to as restore points. To do this, it monitors all partitions and drives, as well as driver and application installations. During every 24 hours (in WinXP) or 10 hours (in WinMe) of computer use or 24 hours of calendar time, System Restore automatically creates a restore point, even if you haven't made any system changes. For example, if you shut down your computer and don't turn it on for three days, System Restore will create a restore point the next time you boot up.

In addition, each time you install a program from a CD or other media, the tool creates a restore point. This also occurs when you install an app via downloaded software. So, even if you're using WinXP's Automatic Updates feature, System Restore will create a restore point once the updates begin the installation process. Plus, you can create your own restore points using the System Restore Wizard.

Over time, you can see that the number of restore points could add up, especially if you use your PC frequently. Rather than eat up hard drive space, System Restore stores only between one to three weeks of restore points. How far back you can go to a restore point depends on three factors: how much you use your PC, how large your hard drive is, and how much drive space your PC has allotted to store System Restore data. As System Restore reaches its limits on creating restore points, the tool drops the earlier restore points. Thus, if you plan to use System Restore, you'll need to do so relatively quickly after you notice a problem.

(NOTE: If your Windows drive has fewer than 200MB of free space, WinMe and WinXP will disable System Restore by default.)

As you use System Restore, the wizard walks you through selecting a restore point on its calendar. Simply select a date, and the tool restores your PC to that earlier time period, with one major exception: System Restore doesn't touch your My Documents folder, and it doesn't alter any files that use such common file extensions as .DOC or .XLS.

(Continued on page 5)

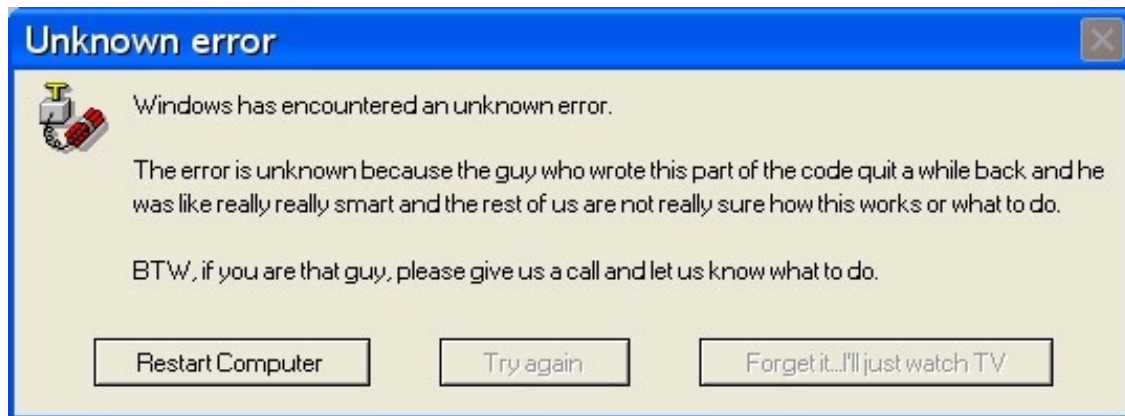
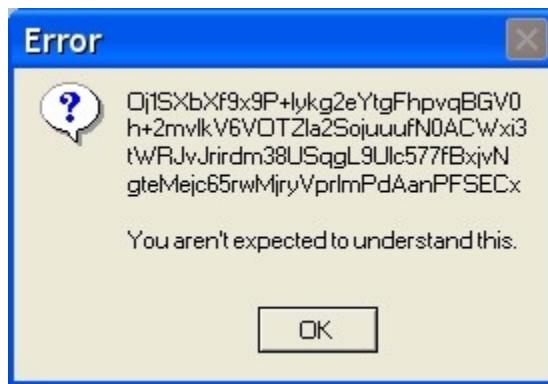


If you don't change your direction, you may end up where you were headed.



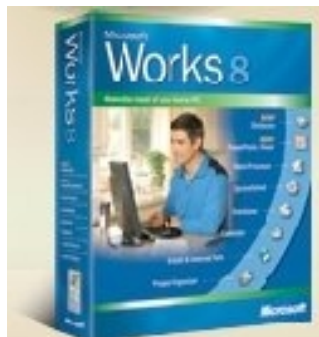
NANAIMO COMPUTER CLUB NEWS

Humour





NANAIMO COMPUTER CLUB NEWS



Microsoft to put Works Suite onto Web

ZNet – Mac Manus

In the clearest sign yet that the big guns are preparing to step up the battle for Web Office, Microsoft has

said it is considering releasing a version of Microsoft Works (the poor cousin of Microsoft Office) as a web suite. The desktop version of Works retails for \$50 and includes a calendar, word processor, spreadsheets, Web Browser and e-mail. While its currently positioned as a home productivity toolset (to do your accounts, write letters, etc), it could pretty easily be re-

positioned as a (small) business web office suite.

In any case - because Works includes basic word processing and spreadsheet software, to web-enable that and bundle it as a suite would be a step above what both Microsoft and Google currently offer. Right now Microsoft has Office Live (web hosting, email, project collaboration) and Google offers Apps For Your Domain (email, IM, calendar and website creator).

Microsoft's planned web-based Works would be a free package, supported by advertising.

Submitted By: G. Bulger

(Continued from page 3)



A Few Caveats

Although it's a useful tool, System Restore is far from being a complete solution.

Because System Restore is limited to a maximum 12% of hard drive space, it may purge useful restore points before you have a chance to use them.

In addition, it will often render programs useless if they were installed after the restore point; so even though the programs' data files aren't deleted, you may need to uninstall and reinstall any such programs to make it possible to access these data files. Because of this, we recommend that you run Add Or Remove Pro-

grams to take care of potential problems before you use System Restore.

And, perhaps most importantly, System Restore isn't a true backup system. Yes, it can back up copies of the Registry, but that doesn't mean you can count on it to back up other things.

For instance, it won't serve as a backup for earlier versions of Microsoft Word files you accidentally edited or changed. System Restore works best when it's part of a complete restoration system, along with a dedicated backup application and such Windows tools as Add Or Remove Programs. By using a combination of these tools, you can get your system up and running again much more quickly.

Submitted by: Y. Bulger



Jury--Twelve people who determine which client has the better lawyer.



Computer Research News



Swedish Researcher Launches Unique Search Engine For The Web

ScienceDaily.com

The Malmö, Sweden, based company Polar Rose will soon be introducing a Web-based search engine that can find photographs of people by analyzing pictures and identifying faces. The search engine --which will be the first of its kind in the world-- is the result of research carried out by Jan Erik Solem at Technology and Society, Malmö University College.

Jan Erik Solem is part of a research team in applied mathematics that is working with image analysis and computer vision. In his dissertation he shows how computers can be made, through mathematical processes, to create three-dimensional models of objects or persons on the basis of regular photographs.

Simply put, it's a matter of calculating where the camera was positioned in relation to the object and then doing the geometry, according to Jan Erik Solem.

"For faces it's possible in principle to create 3D data on the basis of a single photograph, but most often we have worked with 5-10 still photos or with film sequences."

The technology is applicable to a number of fields, as Jan Erik Solem sees it.

"Much of our research is geared to automating work at the computer. In city planning, for example, and architecture many hours of work are devoted to creating 3D models manually. If that process can be simplified, there will be incredible amounts of money saved. Another conceivable area of use is in gaming, where this technology would make it possible to put objects into the virtual world by photographing them," he says.

Jan Erik Solem himself hopes to soon be living proof that the results of his dissertation can be commercialized. He has started a company called Polar Rose, which has developed a technology for recognizing faces based on his research findings. The product-the Web-based search engine-will be the first in the world that can search for faces and not text.

The search engine will soon undergo testing by a number of beta-users, and roughly by year's end it will be launched full scale, according to Jan Erik Solem.

"Since there is no such search service in existence today, it's going to be really exciting to see how it is received. And if it's a success, then we'll be saddled with the luxury problem of competing with giants like Google, Microsoft, and Yahoo."

Submitted By: Y.Bulger



In the field of observation, chance favors only the prepared minds.



NANAIMO COMPUTER CLUB NEWS

ANNOUNCEMENTS



Due to poor attendance in Summer months your Executive has decided to extend the Summer Break to include the month of August, this will come into effect in Summer 2007



Please Join Us!

Yes!

It's come to this !

We are asking Members to seriously Consider joining the Executive for a Term - We need fresh ideas and New faces to represent our Membership...we are losing several executive members for various reasons and desperately need some replacements.



Please Help!

The Executive meets once per month for Dinner to discuss upcoming meetings, you are not going to be expected to speak publically or present anything, all we need is your presence and suggestions at these meetings ... they are fun and it's an opportunity to eat out

Come on guys & girls do your bit !!



NANAIMO COMPUTER CLUB NEWS

Attachments To Avoid

SmartComputing – Tips

When you receive an email attachment, look carefully at the three-character extension on the end of the file's name. Items such as JPEG pictures (which use the .JPG extension) generally are safe, but there are a number of extensions that indicate the attachment is actually a program that executes when opened, potentially delivering spyware or viruses to your

computer. Below is a quick list of file extensions to avoid clicking at all costs if they arrive via email.

.ADE, .ADP, .BAS, .BAT, .CHM, .CMD, .COM, .CPL, .CRT, .EXE, .HLP, .HTA, .INF, .INS, .ISP, .JS, .JSE, .LNK, .MDA, .MDB, .MDE, .MDZ, .MSC, .MSI, .MSP, .MST, .PCD, .PIF, .REG, .SCR, .SCT, .SHS, .URL, .VB, .VBE, .VBS, .WSC, .WSF, and .WSH

Submitted by: Greg Wilson

Online Shopping

www.wiggle-n-waggle.com/
www.powersquid.net/
www.abebooks.com/



SanDisk introduces the world's highest capacity card for professional photographers

The 16-gigabyte SanDisk Extreme III CompactFlash

Large Capacities, High Reliability and High Performance, Ideal For Digital SLRs & Broadcast-Quality Camcorders

Sep. 26, 2006 – SanDisk introduces 12- and 16-gigabyte (GB) SanDisk Extreme® III CompactFlash® cards to its award-winning Extreme III performance line, making these the highest capacity cards in the world.

The new high-performance, large-capacity

cards are ideal for professional photographers who shoot RAW or high-resolution JPG files and need the performance, reliability and capacity to capture these large files.

The new SanDisk Extreme III CompactFlash cards can also be used with the Grass Valley™ Infinity Series Digital Media Camcorder, the first camcorder introduced in the broadcast industry that uses non-proprietary, removable, solid-state flash memory cards as recording and playback media.

The new cards will have minimum write and read speeds of 20 megabytes per second (MB/sec.) and will ship to photo retailers by the end of the year. the large files can fill up a card very quickly. Having a large capacity card lets me focus on what I love to do—take pictures.”

Submitted by: Y. Bulger



The End